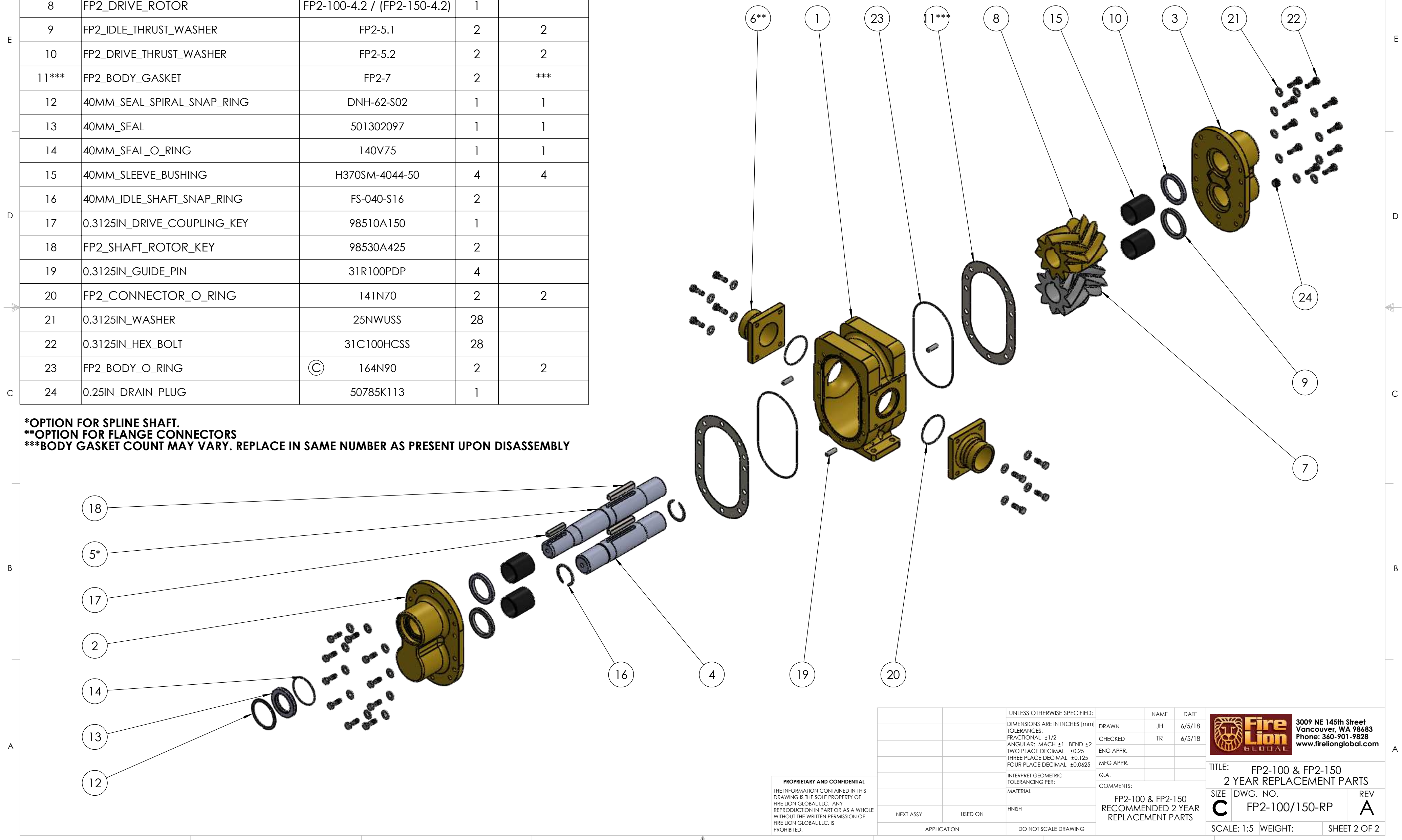


ITEM NO.	DESCRIPTION	PART NUMBER FP2-100 / (FP2-150)	QTY.	2 YEAR REPLACEMENT PART QTY.
1	FP2_BODY	FP2-100-2.1 / (FP2-150-2.1)	1	
2	FP2_FRONT_ENDCOVER	FP2-2.2	1	
3	FP2_BACK_ENDCOVER	FP2-2.3	1	
4	FP2_IDLE_SHAFT	FP2-100-1.1 / (FP2-150-1.1)	1	
5*	FP2_DRIVE_SHAFT	FP2-100-1.2 / (FP2-150-1.2)	1	
6**	FP2_GROOVE_CONNECTOR	FP2-3.2	2	
7	FP2_IDLE_ROTOR	FP2-100-4.1 / (FP2-150-4.1)	1	
8	FP2_DRIVE_ROTOR	FP2-100-4.2 / (FP2-150-4.2)	1	
9	FP2_IDLE_THRUST_WASHER	FP2-5.1	2	2
10	FP2_DRIVE_THRUST_WASHER	FP2-5.2	2	2
11***	FP2_BODY_GASKET	FP2-7	2	***
12	40MM_SEAL_SPIRAL_SNAP_RING	DNH-62-S02	1	1
13	40MM_SEAL	501302097	1	1
14	40MM_SEAL_O_RING	140V75	1	1
15	40MM_SLEEVE_BUSHING	H370SM-4044-50	4	4
16	40MM_IDLE_SHAFT_SNAP_RING	FS-040-S16	2	
17	0.3125IN_DRIVE_COUPLING_KEY	98510A150	1	
18	FP2_SHAFT_ROTOR_KEY	98530A425	2	
19	0.3125IN_GUIDE_PIN	31R100PDP	4	
20	FP2_CONNECTOR_O_RING	141N70	2	2
21	0.3125IN_WASHER	25NWUSS	28	
22	0.3125IN_HEX_BOLT	31C100HCSS	28	
23	FP2_BODY_O_RING	© 164N90	2	2
24	0.25IN_DRAIN_PLUG	50785K113	1	

*OPTION FOR SPLINE SHAFT.
 **OPTION FOR FLANGE CONNECTORS
 ***BODY GASKET COUNT MAY VARY. REPLACE IN SAME NUMBER AS PRESENT UPON DISASSEMBLY



PROPRIETARY AND CONFIDENTIAL
 THE INFORMATION CONTAINED IN THIS DRAWING IS THE SOLE PROPERTY OF FIRE LION GLOBAL LLC. ANY REPRODUCTION IN PART OR AS A WHOLE WITHOUT THE WRITTEN PERMISSION OF FIRE LION GLOBAL LLC IS PROHIBITED.

UNLESS OTHERWISE SPECIFIED:		NAME	DATE
DIMENSIONS ARE IN INCHES [mm]		JH	6/5/18
TOLERANCES:		TR	6/5/18
FRACTIONAL ±1/2		ENG APPR.	
ANGULAR: MACH ±1 BEND ±2		MFG APPR.	
TWO PLACE DECIMAL ±0.25		Q.A.	
THREE PLACE DECIMAL ±0.125		COMMENTS:	
FOUR PLACE DECIMAL ±0.0625		FP2-100 & FP2-150 RECOMMENDED 2 YEAR REPLACEMENT PARTS	
INTERPRET GEOMETRIC TOLERANCING PER:	FINISH	SCALE: 1:5	WEIGHT:
MATERIAL	DO NOT SCALE DRAWING		
NEXT ASSY	USED ON		
APPLICATION			



TITLE: FP2-100 & FP2-150 2 YEAR REPLACEMENT PARTS		
SIZE	DWG. NO.	REV
C	FP2-100/150-RP	A
SCALE: 1:5	WEIGHT:	SHEET 2 OF 2