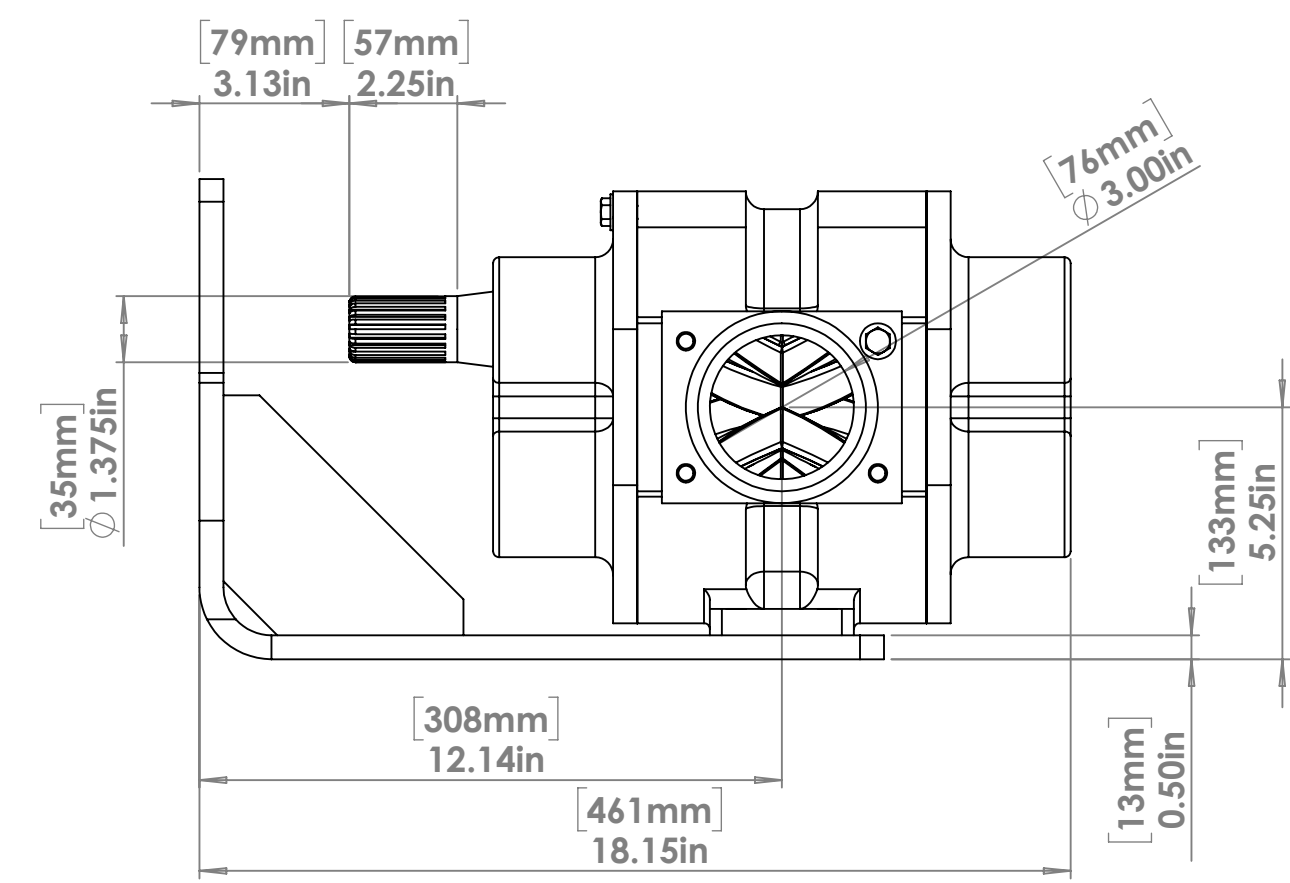
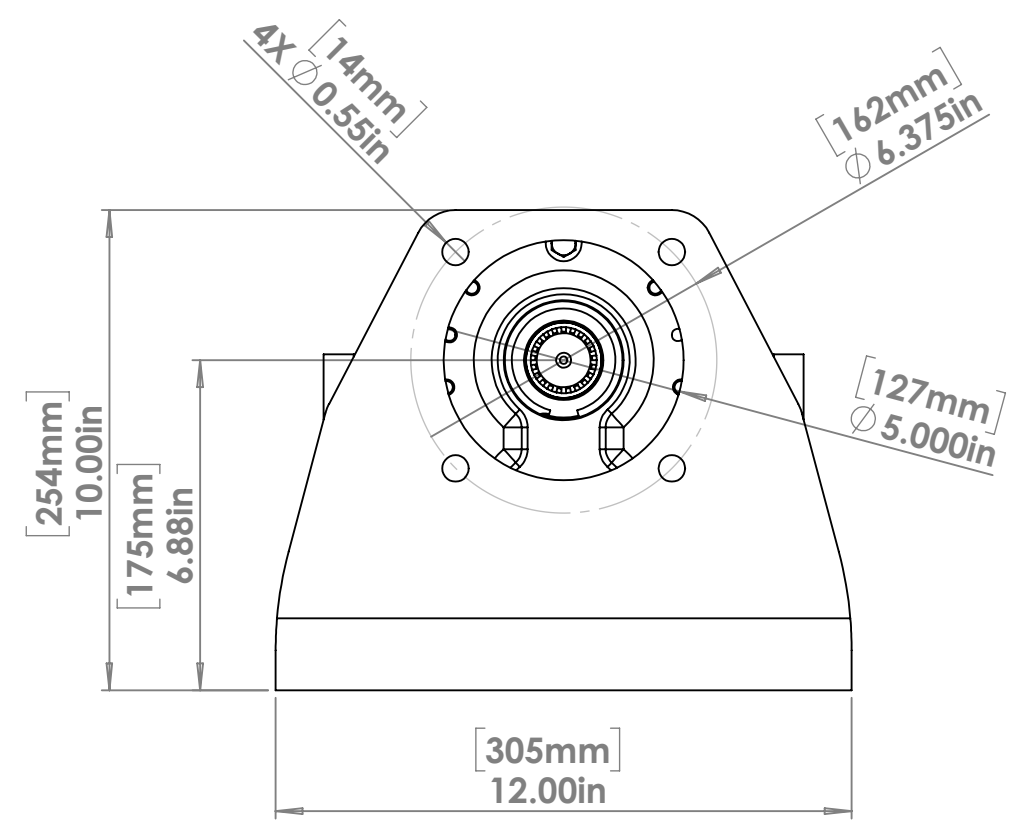
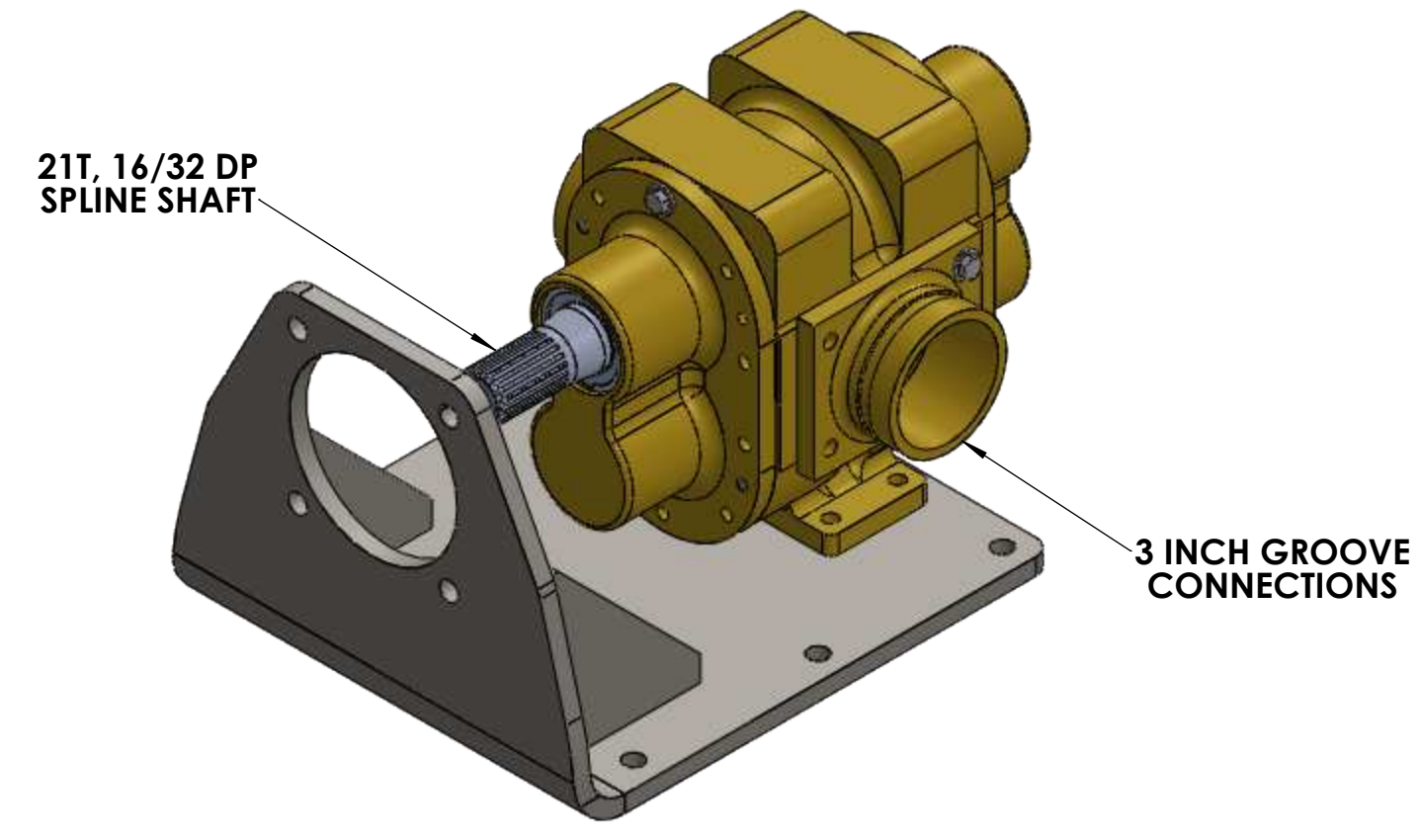
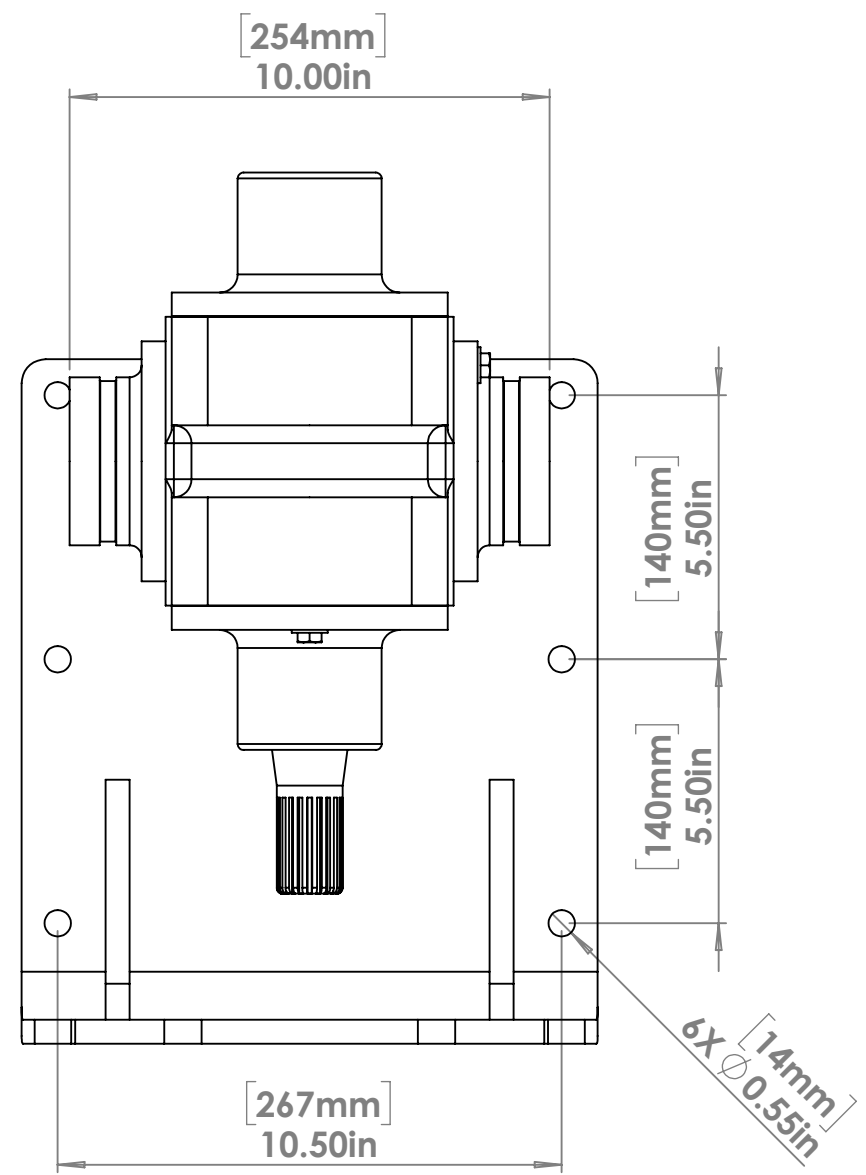


REVISIONS				
ZONE	REV.	DESCRIPTION	DATE	APPROVED
	A	APPROVED SUBMITTAL	09/12/2016	09/12/2016



**NOTES**

1. HYDRAULIC DRIVE BRACKET IS DESIGNED FOR USE WITH THE 'SAE C' SIZED HYDRAULIC MOTORS.
2. FLANGED CONNECTOR OPTION AVAILABLE (SEE REPRESENTATIVE FOR DETAILS).
3. OTHER OPTIONS EXIST - PLEASE CONTACT FIRE LION.

**PROPRIETARY AND CONFIDENTIAL**  
 THE INFORMATION CONTAINED IN THIS DRAWING IS THE SOLE PROPERTY OF FIRE LION GLOBAL LLC. ANY REPRODUCTION IN PART OR AS A WHOLE WITHOUT THE WRITTEN PERMISSION OF FIRE LION GLOBAL LLC IS PROHIBITED.

UNLESS OTHERWISE SPECIFIED:		NAME	DATE
DIMENSIONS ARE IN INCHES [mm]		DRAWN	SK 09/12/16
TOLERANCES:		CHECKED	TR 09/12/16
FRACTIONAL: ±1/4		ENG APPR.	
ANGULAR: MACH ±1		MFG APPR.	
BEND ±1		Q.A.	
TWO PLACE DECIMAL ±0.125		COMMENTS:	
THREE PLACE DECIMAL ±0.010		FP2-175 - PUMP ASSEMBLY -	
FOUR PLACE DECIMAL ±0.005		GROOVE CONNECTORS -	
INTERPRET GEOMETRIC TOLERANCING PER:		SPLINE SHAFT - HYDRAULIC	
MATERIAL		DRIVE BRACKET	
NEXT ASSY	USED ON	FINISH	
APPLICATION	DO NOT SCALE DRAWING		



**TITLE:** FP2-175 - BRACKET ASSEMBLY  
**SIZE:** DWG. NO. C FP2-175-0.2.1.1  
**REV:** A  
**SCALE:** 1:4 **WEIGHT:** **SHEET 1 OF 1**