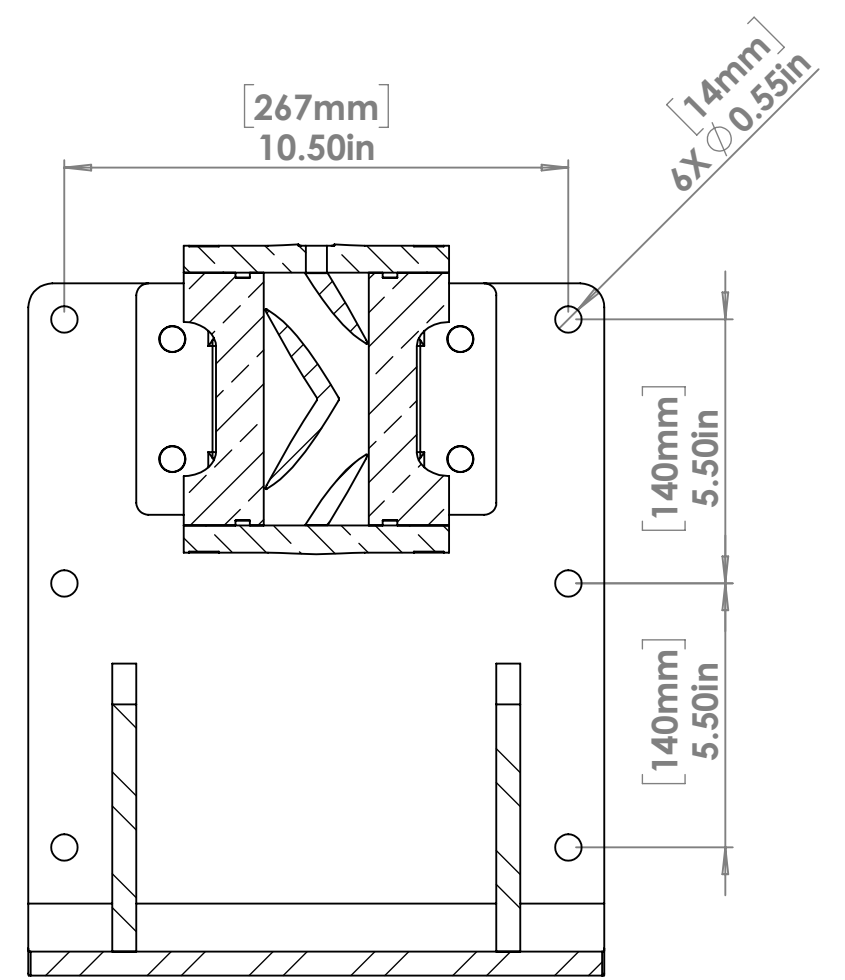
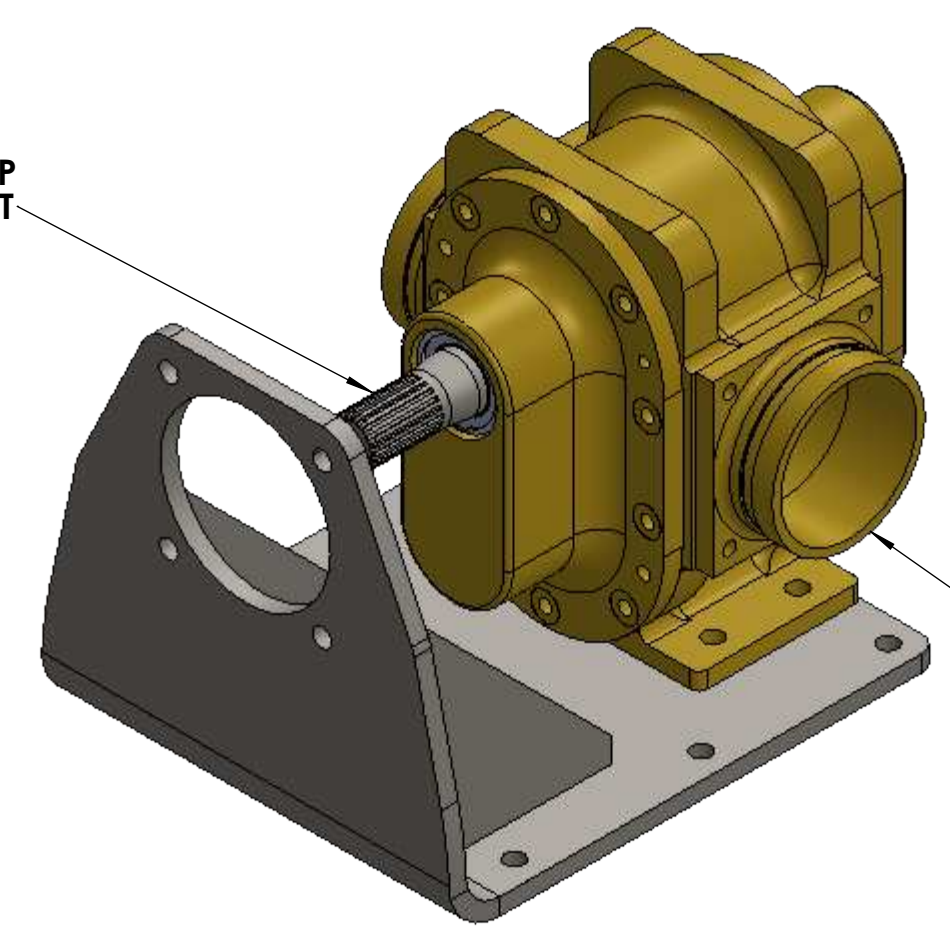


REVISIONS				
ZONE	REV.	DESCRIPTION	DATE	APPROVED
	A	APPROVED SUBMITTAL	09/12/2016	09/12/2016

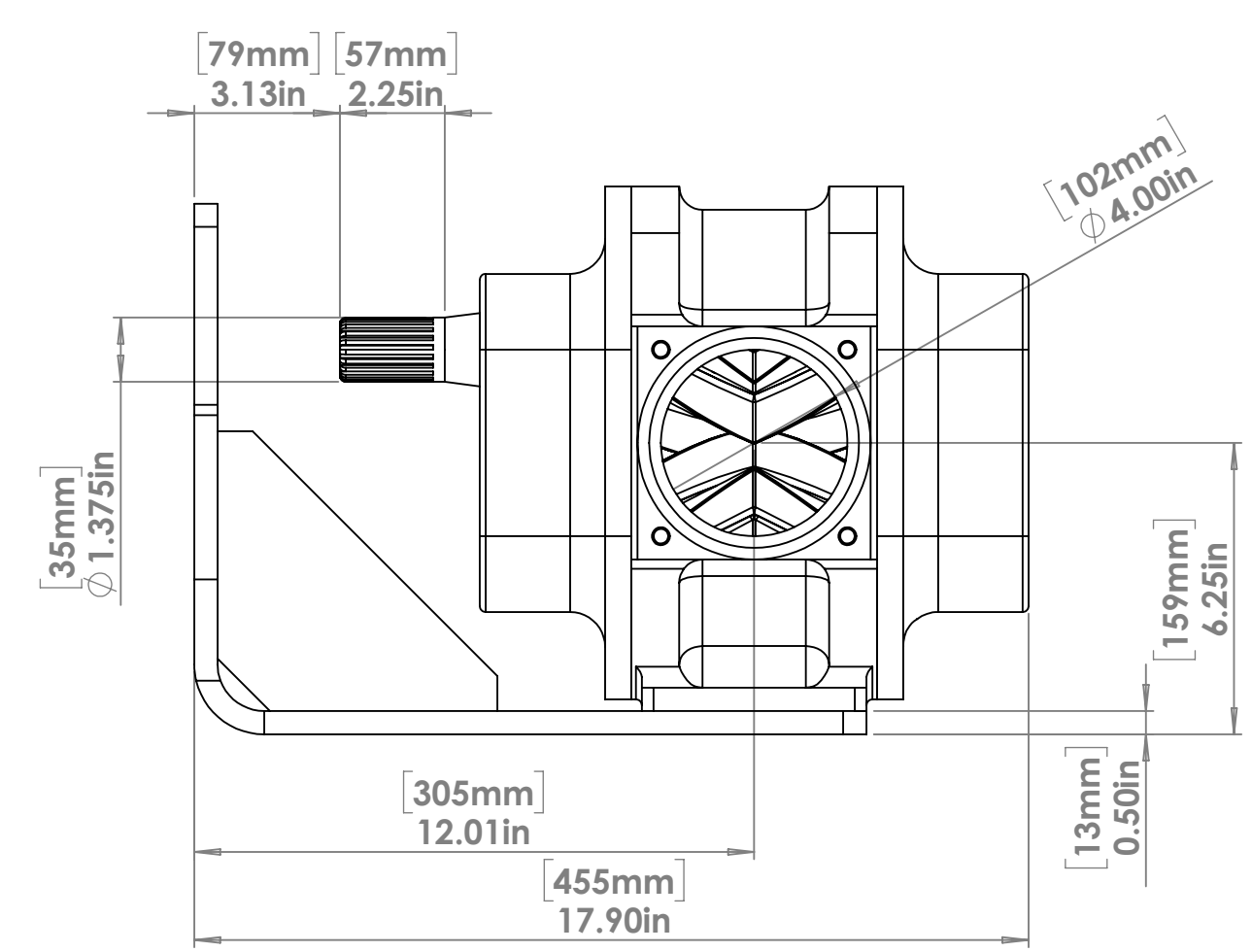
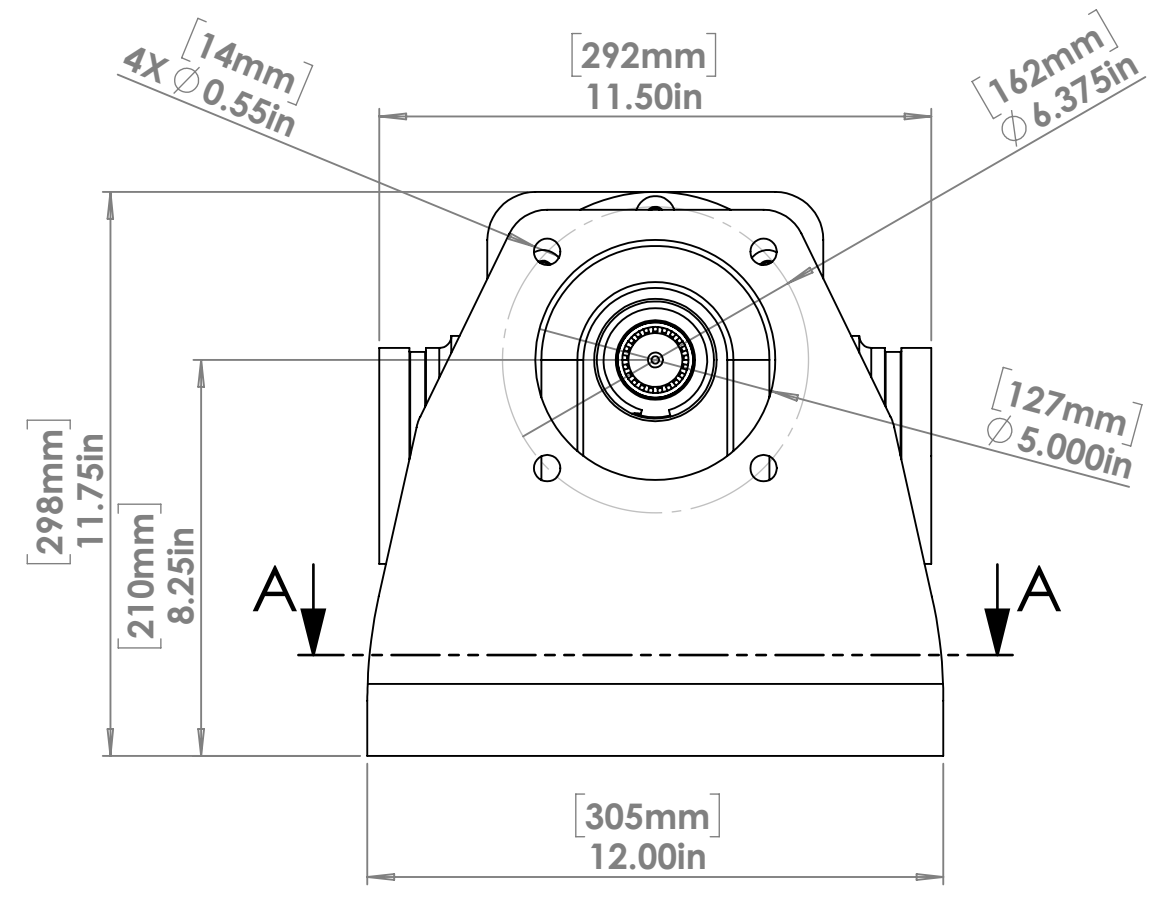


SECTION A-A
SCALE 1 : 4

21T, 16/32 DP
SPLINE SHAFT



4 INCH GROOVE
CONNECTIONS



NOTES

1. HYDRAULIC DRIVE BRACKET IS DESIGNED FOR USE WITH THE 'SAE C' SIZED HYDRAULIC MOTORS.
2. FLANGED CONNECTOR OPTION AVAILABLE (SEE REPRESENTATIVE FOR DETAILS).
3. OTHER OPTIONS EXIST - PLEASE CONTACT FIRE LION.

PROPRIETARY AND CONFIDENTIAL
THE INFORMATION CONTAINED IN THIS DRAWING IS THE SOLE PROPERTY OF FIRE LION GLOBAL LLC. ANY REPRODUCTION IN PART OR AS A WHOLE WITHOUT THE WRITTEN PERMISSION OF FIRE LION GLOBAL LLC IS PROHIBITED.

UNLESS OTHERWISE SPECIFIED: DIMENSIONS ARE IN INCHES [mm] TOLERANCES: FRACTIONAL ±1/4 ANGULAR: MACH ±1 BEND ±1 TWO PLACE DECIMAL ±0.125 THREE PLACE DECIMAL ±0.010 FOUR PLACE DECIMAL ±0.005		NAME	DATE
DRAWN		SK	09/12/16
CHECKED		TR	09/12/16
ENG APPR.			
MFG APPR.			
INTERPRET GEOMETRIC TOLERANCING PER:		Q.A.	
MATERIAL		COMMENTS:	
FINISH		FP4-250 - PUMP ASSEMBLY - GROOVE CONNECTORS - SPLINE SHAFT - HYDRAULIC DRIVE BRACKET	
NEXT ASSY	USED ON		
APPLICATION	DO NOT SCALE DRAWING		



TITLE: FP4-250 - BRACKET ASSEMBLY		
SIZE	DWG. NO.	REV
C	FP4-250-0.2.1.1	A
SCALE: 1:4	WEIGHT:	SHEET 1 OF 1