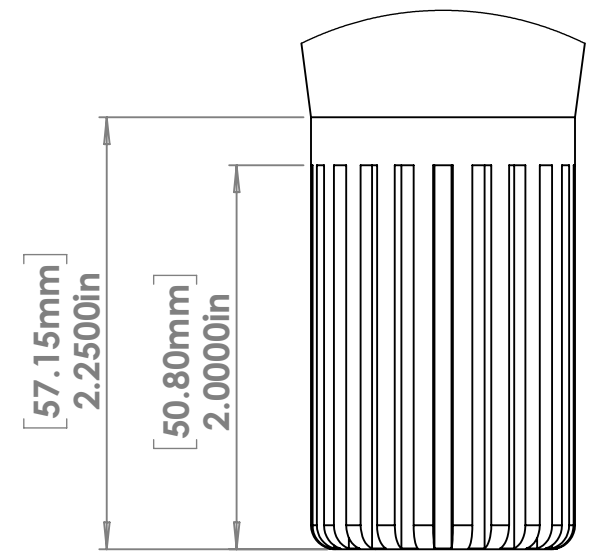
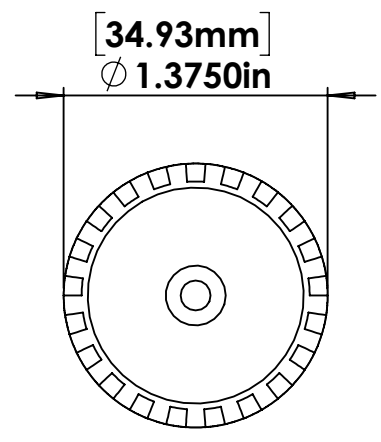
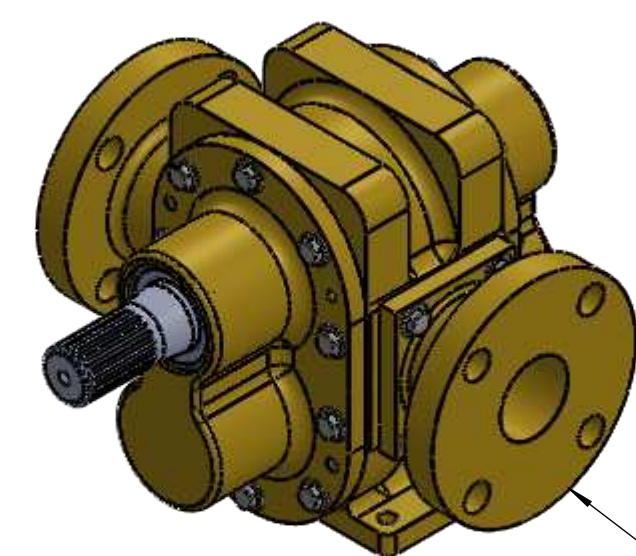
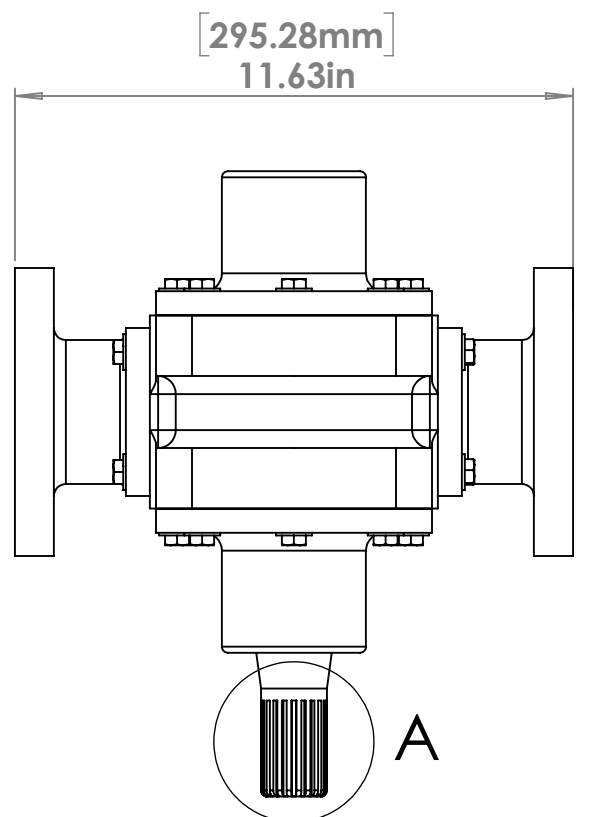


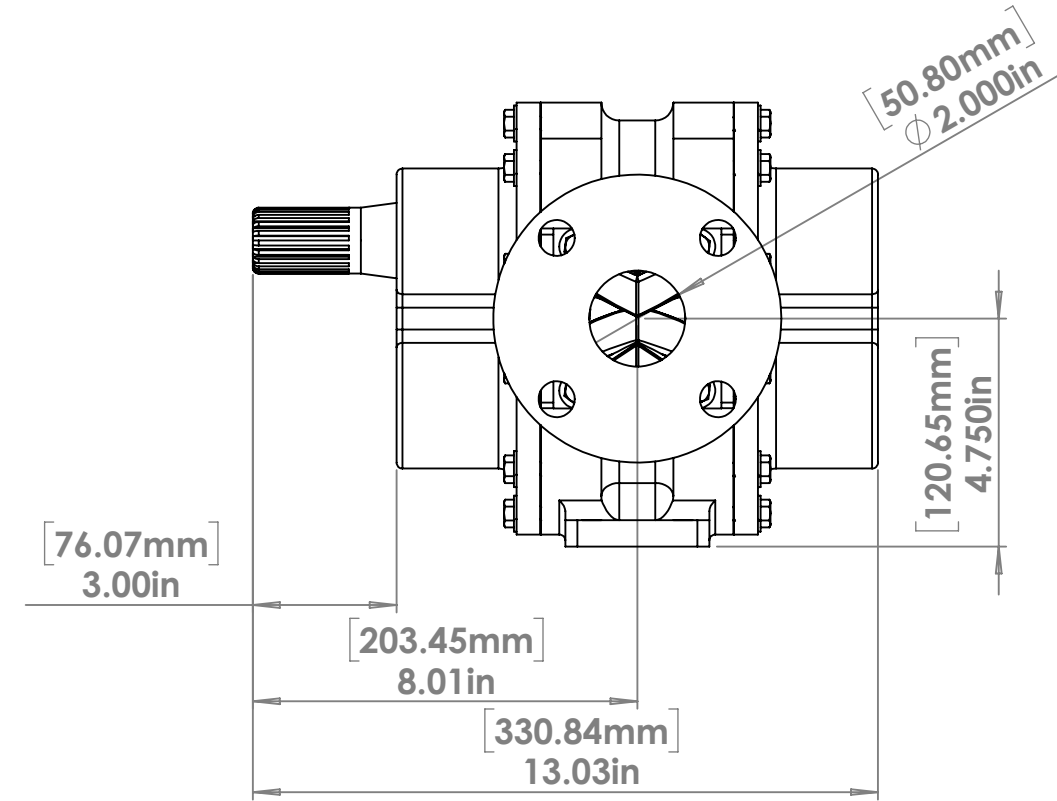
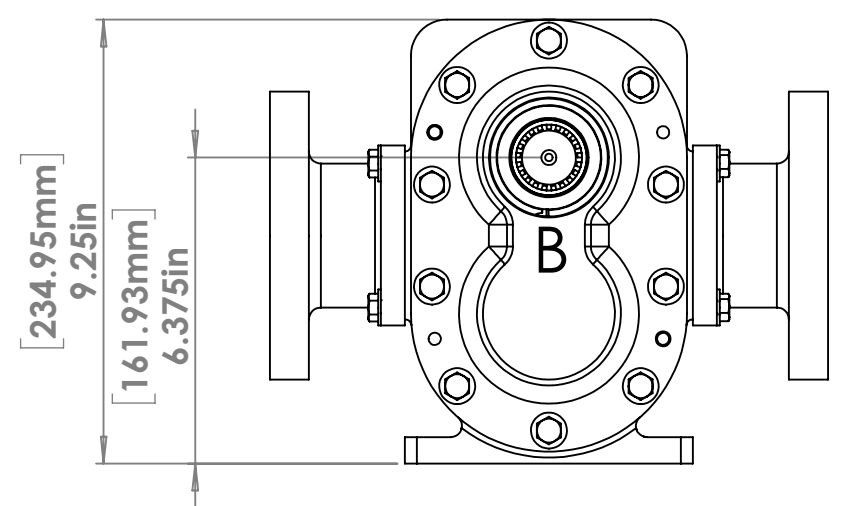
REVISIONS				
ZONE	REV.	DESCRIPTION	DATE	APPROVED
	A	APPROVED SUBMITTAL	11/08/2016	11/08/2016
	B	ALL HARDWARE ADDED TO MODEL.	09/01/2017	09/01/2017



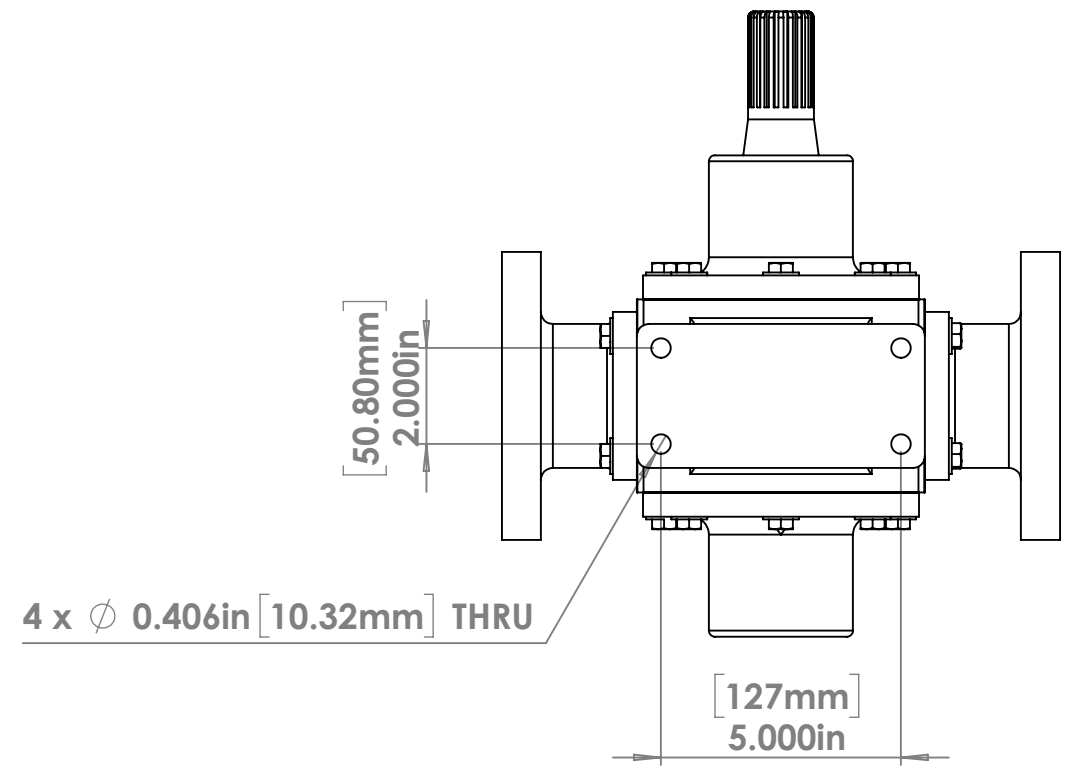
DETAIL A  
SCALE 1:1



DETAIL B  
SCALE 1:1



NOTE: The spline is a 21 tooth, 16/32 pitch, 30 degree, flat root, side fit, involute spline.



PROPRIETARY AND CONFIDENTIAL  
THE INFORMATION CONTAINED IN THIS DRAWING IS THE SOLE PROPERTY OF FIRE LION GLOBAL LLC. ANY REPRODUCTION IN PART OR AS A WHOLE WITHOUT THE WRITTEN PERMISSION OF FIRE LION GLOBAL LLC IS PROHIBITED.

UNLESS OTHERWISE SPECIFIED: DIMENSIONS ARE IN INCHES [mm] TOLERANCES: FRACTIONAL ±1/2 ANGULAR: MACH ±1 BEND ±2 TWO PLACE DECIMAL ±0.25 THREE PLACE DECIMAL ±0.125 FOUR PLACE DECIMAL ±0.0625		NAME	DATE
DRAWN	SK	09/01/17	
CHECKED	TR	09/01/17	
ENG APPR.			
MFG APPR.			
INTERPRET GEOMETRIC TOLERANCING PER:	Q.A.		
MATERIAL	COMMENTS:		
FINISH	FP2-100 PUMP ASSEMBLY WITH 150# FLANGE CONNECTORS AND SPLINE DRIVE SHAFT		
NEXT ASSY	USED ON		
APPLICATION	DO NOT SCALE DRAWING		



TITLE: FP2-100 - Flange Spline ASSY  
 SIZE DWG. NO. REV  
**C** FP2-100-0.1.1.0 **B**  
 SCALE: 1:4 WEIGHT: SHEET 1 OF 1